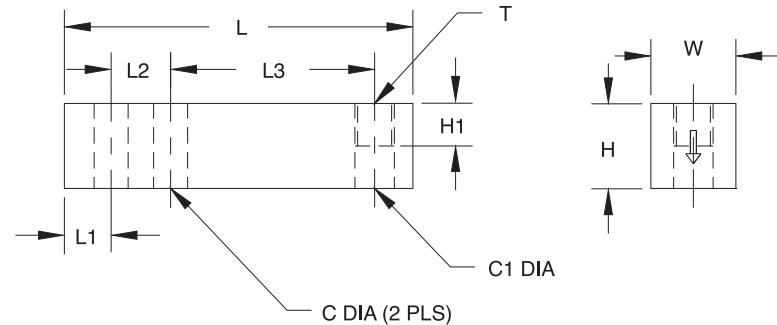


5123 Single-Ended Beam, Alloy Steel

NTEP 1:5000 Class III Multiple Cell, IP67



RATED CAPACITY	DIMENSIONS											
	C	C1	H	H1	L	L1	L2	L3	L4	T	W	
lb/inches												
1000-4000	.53	.53	1.25	.62	5.12	.62	1.00	3.00	2.25	1/2-20 UNF-2B	1.25	
5000-10,000	.78	.78	1.50	.75	6.75	.75	1.50	3.75	3.00	3/4-16 UNF-2B	1.50	
kg/mm												
453.6-1814.4	13.5	13.5	31.8	15.8	130.0	15.8	25.4	76.2	57.2	1/2-20 UNF-2B	31.8	
2268.0-4535.9	19.8	19.8	38.1	19.1	171.5	19.1	38.1	95.3	76.2	3/4-16 UNF-2B	38.1	

SPECIFICATIONS:

Full Scale Output:	3.0 mV/V
Bridge Resistance:	350 ohms, nominal
Material/Finish:	High-alloy steel, nickel plated
Temperature:	Compensated range 14°F to 104°F/-10°C to 40°C
Manufacturer	
Model Number:	5123-A5-XX-20P1
Safe Overload:	150% Full scale
Rated Excitation:	10V DC (15V maximum)
Combined Error:	0.025% Full scale
Non-repeatability:	0.01% Full scale

Insulation Resistance:	5000 megohms
Deflection at Capacity:	1000 lb = .016"/.4 mm, 2500 lb = .03"/.8 mm, 4000 lb = .04"/1.0 mm, 5000 lb = .035"/.9 mm, 10,000 lb = .042"/1.1 mm
Seal Type:	Environmentally-sealed, IP67
Cable Length:	20'/6.1 m
Cable Color Code:	Red+ Excitation Black.....- Excitation Green.....+ Signal White- Signal Orange.... Shield
Warranty:	2-year limited warranty

5123 ORDER INFORMATION

Load Rating	Part #	Suggested List Price
1000 lb (453.6 kg)	21516	\$225.00
2500 lb (1134.0 kg)	21517	\$225.00
4000 lb (1814.4 kg)	21518	\$225.00
5000 lb (2268.0 kg)	21519	\$375.00
10,000 lb (4535.9 kg)	21520	\$375.00

INTERCHANGEABLE PRODUCTS

Manufacturer	Model
Rice Lake Weighing Systems	(see page 106) RL30000
Vishay Tedea-Huntleigh	(see page 331) 3411
Artech	30310

WEIGH MODULE AVAILABLE