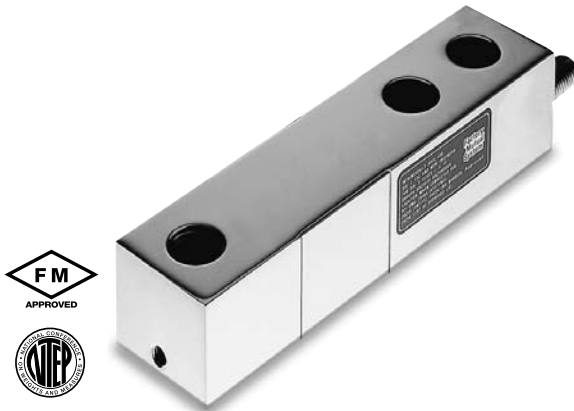
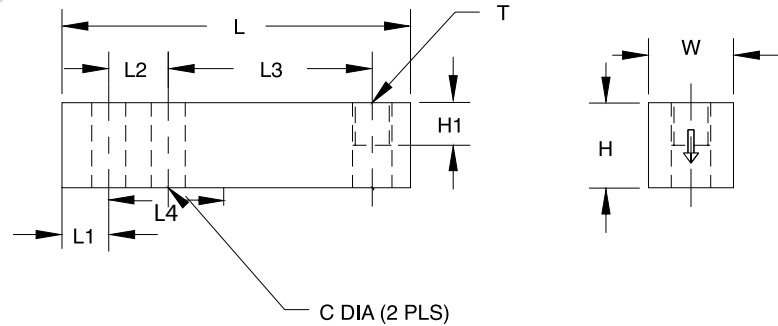


9123 Single-Ended Beam, Stainless Steel

NTEP 1:5000 Class III Multiple Cell, IP67



Picture is a representation of actual product



RATED CAPACITY	DIMENSIONS							
	C	H	H1	L	L2	L3	T	W
lb/inches								
250-5000 SE	.53	1.23	.67	5.12	1.00	3.00	1/2-20 UNF-2B	1.23
5000-15,000	.78	1.45	.70	6.75	1.50	3.75	3/4-16 UNF-2B	1.50
20,000	1.06	1.95	.98	8.75	2.00	4.75	1-12 UNF-2B	1.95
kg/mm								
453.6-1814.4	13.5	31.2	15.8	130.1	25.4	76.2	1/2-20 UNF-2B	31.2
2268.0-6804.0	19.8	38.1	19.1	171.5	38.1	95.3	3/4-16 UNF-2B	38.1
9072	26.9	49.5	24.8	222.2	50.8	120.6	1-12 UNF-2B	49.5

SPECIFICATIONS:

Full Scale Output: 3.0 mV/V
Bridge Resistance: 350 ohms, nominal
Material/Finish: Stainless steel
Temperature: Compensated range
 0°F to 150°F/-18°C to 65°C
Manufacturer
Model Number: 9123-A5-XX-20P1
Safe Overload: 150% Full scale
Rated Excitation: 10V DC (15V maximum)
Combined Error: 0.02% Full scale

Non-repeatability: 0.01% Full scale
Insulation Resistance: 5000 megohms
Seal Type: Environmentally sealed, IP67
Cable Length: 20'±6.1 m
Cable Color Code: Red + Excitation
 Black..... - Excitation
 Green..... + Signal
 White - Signal
 Orange.... Shield
Warranty: 1-year limited warranty

9123 ORDER INFORMATION

Load Rating	Part #	Price
NTEP		
250 lb (113.4 kg)	69380	\$295.00
500 lb (226.8 kg)	69381	\$295.00
1000 lb (453.6 kg)	69382	\$295.00
2500 lb (1134 kg)	69383	\$295.00
4000 lb (1814.4 kg)	69384	\$295.00
5000 lb SE (2268.0 kg)	69385	\$295.00
5000 lb (2268.0 kg)	69386	\$375.00
10,000lb (4536.0 kg)	69387	\$375.00
15,000 lb (6804.0 kg)	69388	\$645.00
20,000 lb (9072.0 kg)	69389	\$645.00

SE refers to small envelope

INTERCHANGEABLE PRODUCTS

Manufacturer	Model
Rice Lake Weighing Systems (see page 112) RL39123*
HBM (see page 232) B35

WEIGH MODULE AVAILABLE

Model	Page #
RL50210 TA32
RL1800 Series44

* Non-NTEP